

## Episode 2

Around September time our thoughts turn to our Christmas village creation. We have limited options on where to locate our village and it has grown in size over the years. Last year it was built in the conservatory, a good sized space for our ever expanding collection. However we felt that although great for visitors, we didn't get the benefit of it being visible to us when relaxing in the lounge. So we decided the best option was to re-locate back into the main room. A space we used three years ago, but not as big as the last two years.



We set our weekend to start our build and discussed the various scenarios to include this year. The reality being we have far too much stuff to fit it all in. Indeed we still have a box, purchased in the January sales, that we haven't even opened yet. Neither of us can even remember what we ordered!



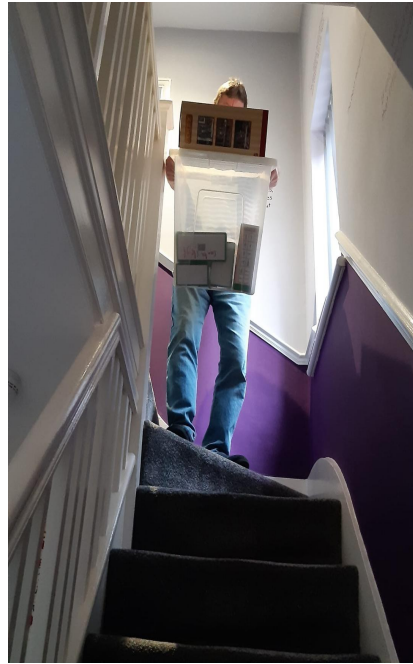
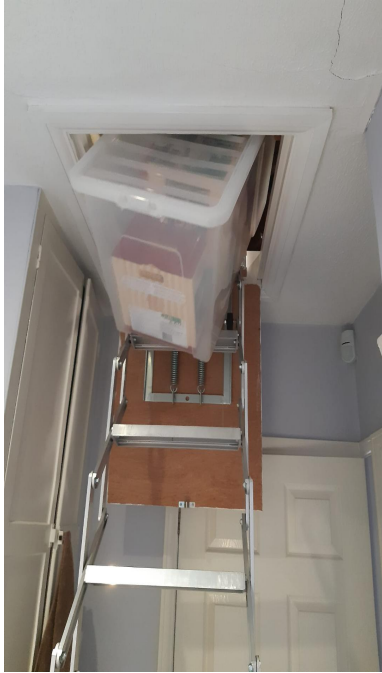
Ahead of our build weekend we started our visits to garden centre outlets. All the seasonal displays and merchandise, the lights and festive food on offer really gets us in the spirit to start our village. Also it's good to see the Lemax display and any new lines that we haven't come across before.



We bought a couple of new items for our reduced size village, a nice facade and a sauna! ( Sue's choice)



The next job is to retrieve all our Lemax collection down from the attic. No easy feat as it involves climbing a ladder and passing it all down, then carrying it all down a flight of stairs. We are not getting any younger and the physical exertion of getting it all downstairs was exhausting!



Next time I'll write about the difficult decisions we made on downsizing our village.

Cheers for now!

Phil and Sue  
Northampton  
England